



Town & Country

High Street, Eaton Bray

Guide Price £595,000



High Street

Eaton Bray

- Impressive Four Bedroom Property In The Heart Of Eaton Bray
- Living room With Feature Fireplace
- Dining Room & Conservatory with Garden Access
- Utility Room
- Kitchen / Diner With Built In Appliances
- 4 Bedrooms & Family Bathroom
- Primary with Ensuite Bathroom
- Double Garage & Gated Driveway Parking For Multiple Vehicles
- Secure Private Garden
- Located Close To Local Amenities, The Park, Whipsnade Zoo & Dunstable Downs

Council Tax band: F

Tenure: Freehold

EPC Energy Efficiency Rating: D

EPC Environmental Impact Rating: D



High Street

Eaton Bray

Nestled in the heart of Eaton Bray, this impressive four-bedroom detached home offers spacious and versatile accommodation, perfectly suited to modern family living. The ground floor comprises a generous living room with a feature fireplace, a separate dining room ideal for entertaining, and a bright conservatory with direct access to the garden. The well-appointed kitchen/breakfast room benefits from built-in appliances, ample storage, and convenient side access.

Upstairs, there are four well-proportioned bedrooms, including a principal bedroom with en-suite, alongside a family bathroom serving the remaining bedrooms.

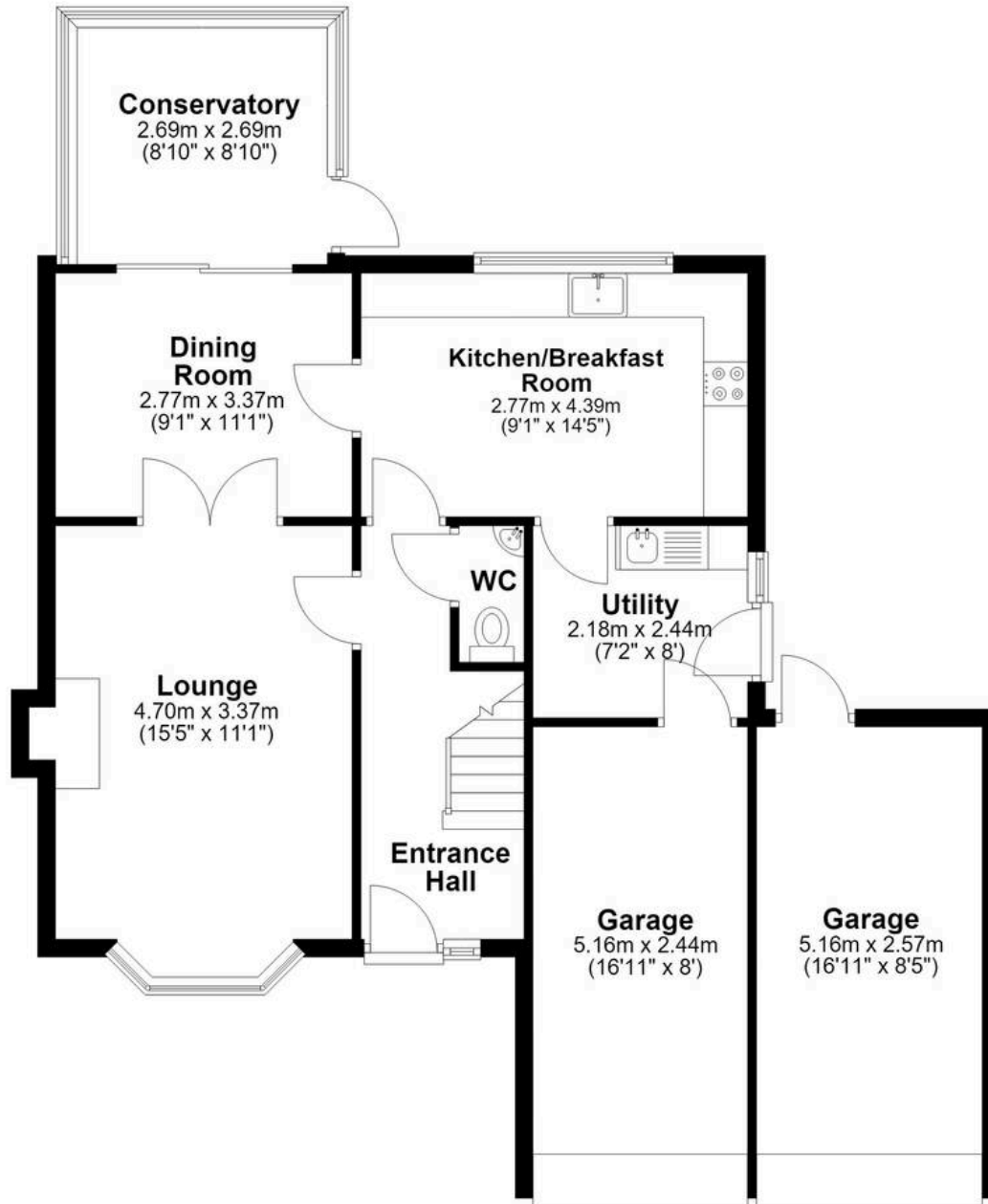
Externally, the property enjoys a substantial private rear garden with mature planting, well-maintained lawns, and a generous patio area, creating an excellent space for outdoor dining, entertaining, and family enjoyment. The garden is fully enclosed and benefits from side access. A gated driveway and double garage provide ample parking and additional security.

Ideally positioned close to local amenities, the village park, Whipsnade Zoo, and the beautiful Dunstable Downs, this home offers the perfect balance of village living and convenience. Eaton Bray enjoys excellent road links via the A5, providing easy access to Dunstable, Leighton Buzzard, and surrounding areas.



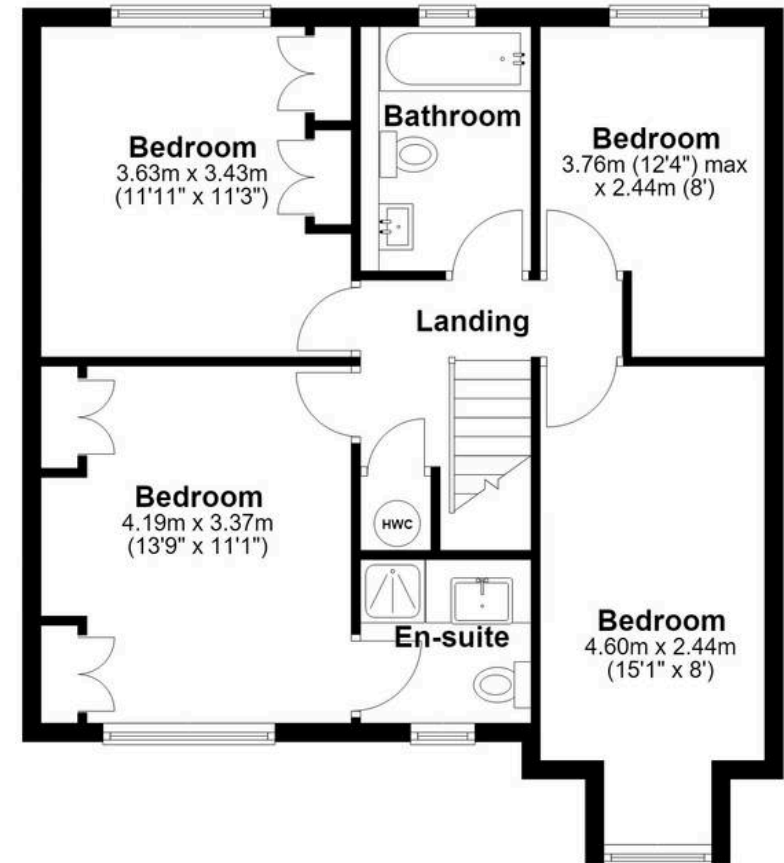
Ground Floor

Approx. 87.7 sq. metres (944.4 sq. feet)



First Floor

Approx. 57.2 sq. metres (616.1 sq. feet)



Total area: approx. 145.0 sq. metres (1560.6 sq. feet)