



Town & Country

Crosslands, Caddington

Guide Price £575,000



Crosslands

Caddington

- Stunning Extended Detached Family Home
- Re-Furbished To a High Standard Throughout
- Entrance Hallway, Utility and Cloakroom
- Forward Facing Living Room/Lounge with Fireplace
- Large Family Room that Opens Into Conservatory and Kitchen
- Fitted Kitchen with Built In Neff Appliances
- Dressing Area to Master Bedroom, and Two Further Bedrooms
- Family Bathroom On Upper Floor
- Great Sized Plot With Garage, Undercover Parking and Large Driveway
- South Facing Rear Garden

Cul-De-Sac Location in the South Beds Village of Caddington

Council Tax band: E

Tenure: Freehold

EPC Energy Efficiency Rating: D

EPC Environmental Impact Rating:



Crosslands

Caddington

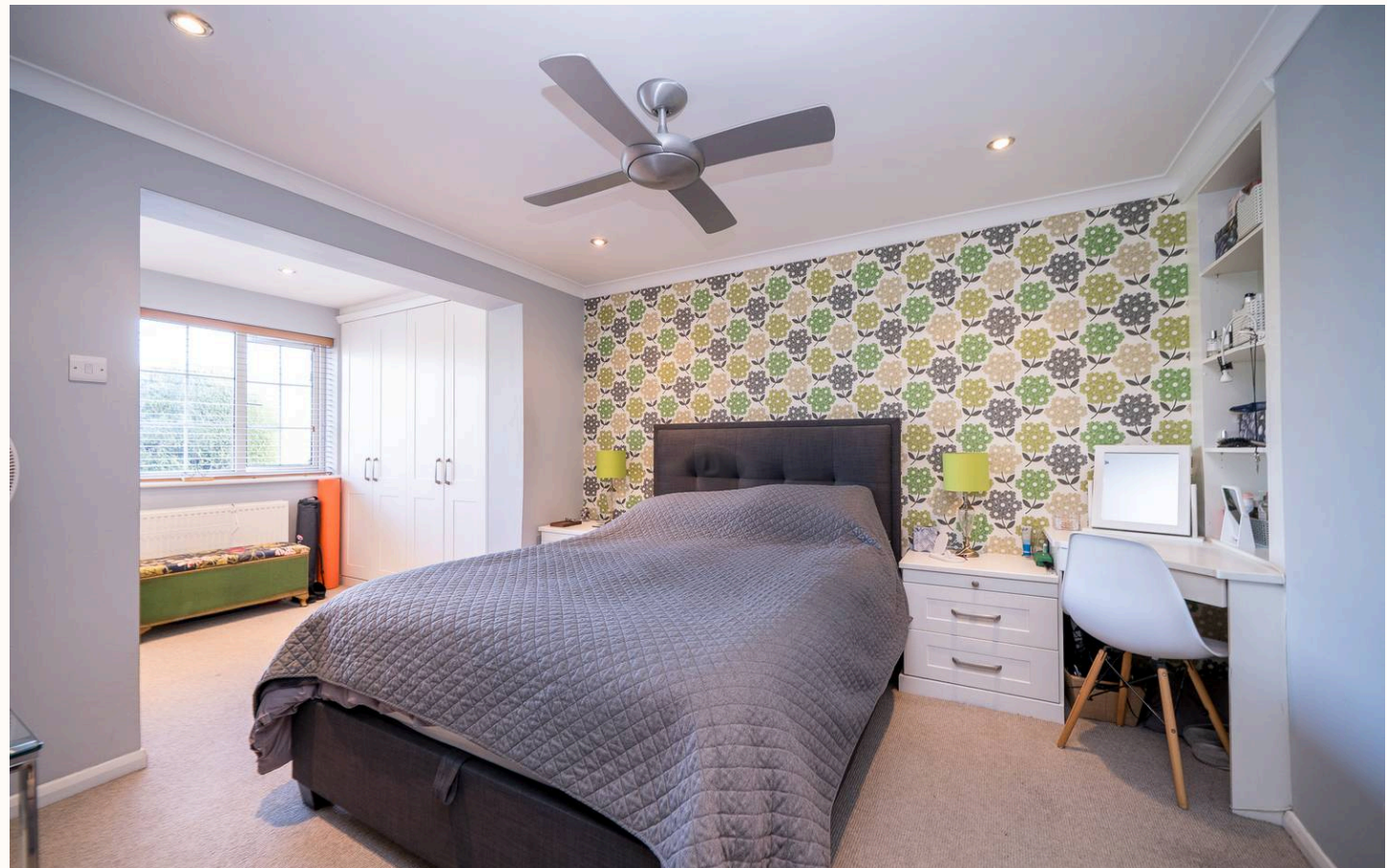
This stunning extended detached family home has been refurbished to a high standard throughout, offering spacious and versatile living accommodation ideal for modern family life.

Upon entering, you are greeted by a welcoming entrance hallway that leads to a practical utility room and a convenient cloakroom, providing ample storage and functionality. The forward facing snug lounge, featuring a charming fireplace, offers a cosy retreat perfect for relaxing evenings. At the heart of the home is a large family room that seamlessly opens into the conservatory and the stylish fitted kitchen, creating a bright and airy space for entertaining or spending quality time together. The kitchen is equipped with built in Neff appliances, ensuring a sleek and contemporary finish, and is thoughtfully designed for both every-day use and hosting guests.

Upstairs, the master bedroom benefits from a dedicated dressing area, offering a touch of luxury and plenty of storage, while two further well proportioned bedrooms provide comfortable accommodation for family members or guests. The modern family bathroom on the upper floor is finished to a high standard, featuring quality fixtures and fittings.

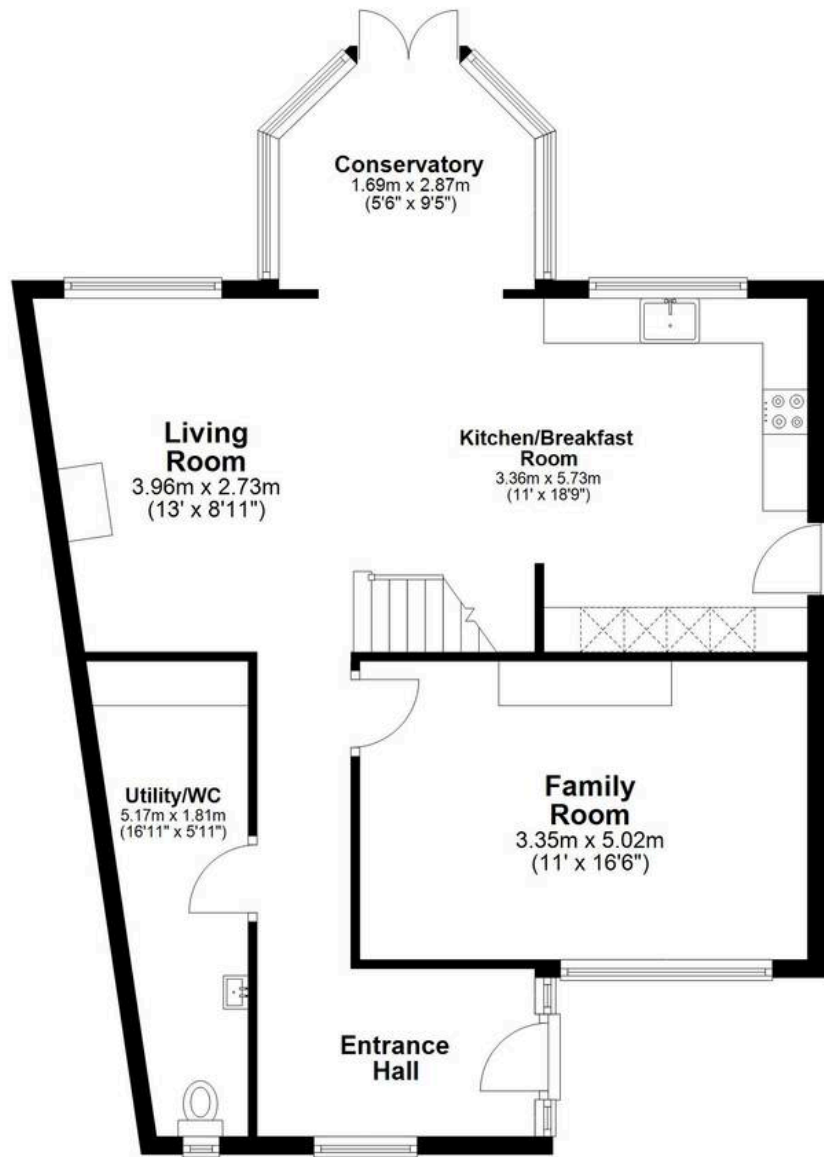
The property occupies a great sized plot, with a garage, undercover parking, and a large driveway providing ample parking solutions for multiple vehicles (ideal for families with more than one car or those who enjoy entertaining).

This beautifully presented home combines style, comfort, and practicality, making it an exceptional choice for discerning buyers seeking a move in ready property in a desirable location. Early viewing is highly recommended to fully appreciate the quality and space on offer.



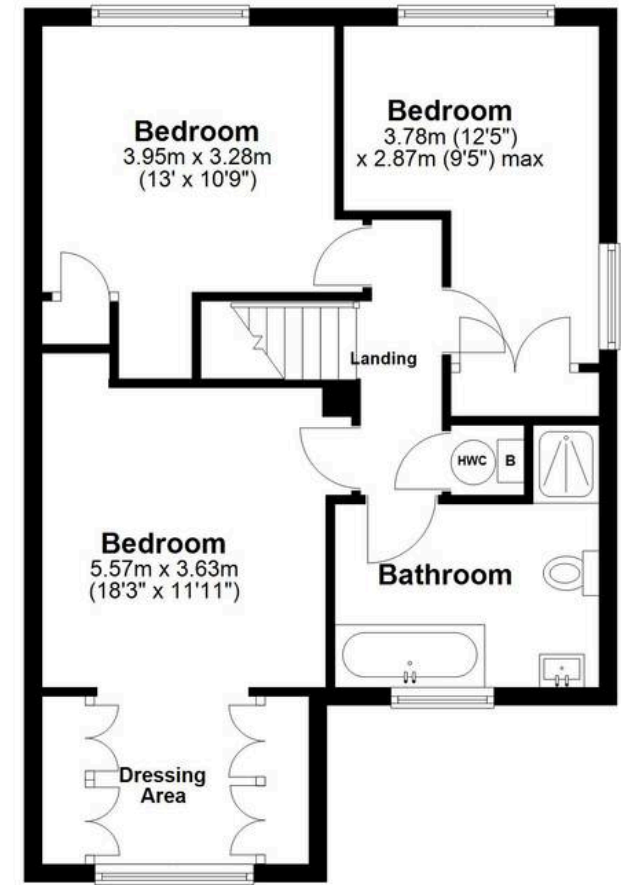
Ground Floor

Approx. 89.0 sq. metres (958.4 sq. feet)



First Floor

Approx. 52.2 sq. metres (561.9 sq. feet)



Total area: approx. 141.2 sq. metres (1520.3 sq. feet)

The Floor Plan is not to Scale and measurements and areas shown are approximate and therefore should be used for illustrative purposes only. The plan has been prepared with due diligence and whilst we have confidence in the information produced it should not be relied upon. Maximum lengths and widths are represented on the plan. If there are any aspects of particular importance, you should carry out or commission your own inspection of the property. Copyright © SKMSTUDIO

Plan produced using PlanUp. □