



Town & Country

56 Bellingham Gardens, Thorn

Guide Price £450,000



56 Bellingham Gardens

Thorn, Dunstable

- Four Bedroom Detached Family Home
- Living Room With Views Of The Park
- Kitchen / Diner With Garden Access
- Utility Room & Downstairs WC
- Primary Bedroom With Ensuite
- 3 Further Bedrooms
- Family Bathroom
- Garage and Driveway Parking for 7 cars
- 6 Years NHBC Warranty
- End of Crescent - Close To Local Amenities

Council Tax band: E

Tenure: Freehold

EPC Energy Efficiency Rating: B

EPC Environmental Impact Rating:



56 Bellingham Gardens

Thorn, Dunstable

This four bedroom detached family home presents an opportunity for families seeking a spacious and comfortable home in a quiet end of crescent location close to local amenities.

Upon entering, you are welcomed by a hallway leading to a generous living room, which offers attractive views of the nearby park, providing a quiet outlook and a wonderful space for relaxation or entertaining guests. The modern kitchen and diner, thoughtfully designed for both functionality and style with AEG appliances, features direct access to the garden, ensuring a seamless flow for indoor and outdoor dining or gatherings. A practical utility room is conveniently positioned off the kitchen, offering additional storage and laundry facilities, while a downstairs WC enhances the convenience for residents and visitors alike.

Upstairs, the primary bedroom is a true retreat, complete with its own ensuite shower room for privacy and comfort. Three further well-proportioned bedrooms provide ample space for family members or guests, and a contemporary family bathroom serves the additional bedrooms, featuring quality fixtures and a stylish finish. The property benefits from a garage and driveway parking for up to three cars, with three additional visitor bays available, making it ideal for households with multiple vehicles or for those who frequently host guests. £22,000 of extras were added when the property was purchased.

The layout has been thoughtfully planned to maximise living space, creating a welcoming space. Located in a peaceful residential area, yet within easy reach of local shops, schools, and transport links, this property is a must see.

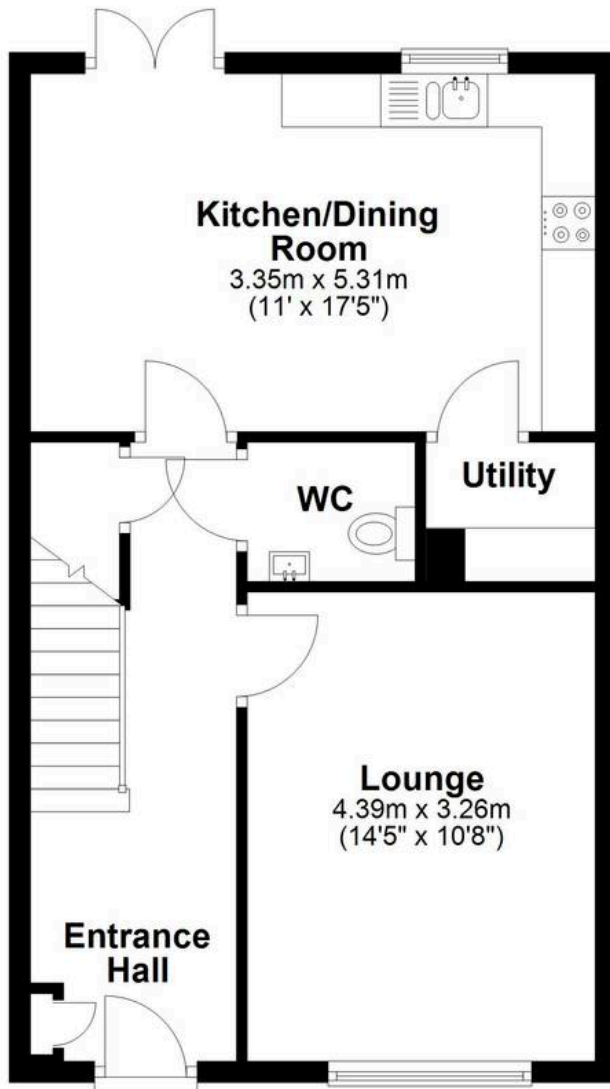
Early viewing is highly recommended to fully appreciate all that this outstanding home has to offer.

Please note that the seller of this property is an employee of Town & Country.



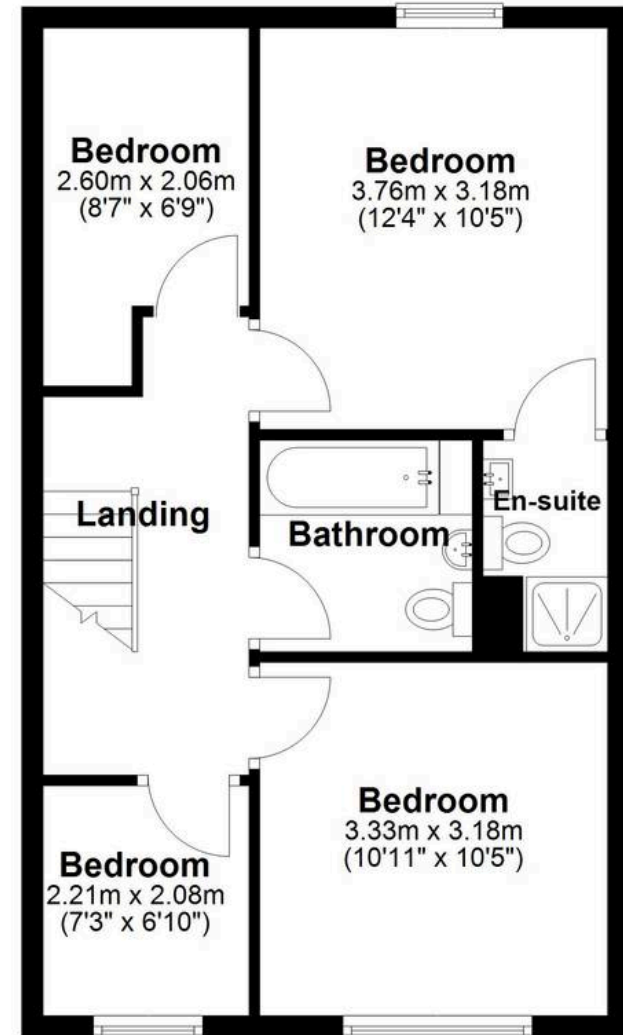
Ground Floor

Approx. 63.9 sq. metres (687.7 sq. feet)



First Floor

Approx. 49.0 sq. metres (527.9 sq. feet)



Total area: approx. 112.9 sq. metres (1215.7 sq. feet)

The Floor Plan is not to Scale and measurements and areas shown are approximate and therefore should be used for illustrative purposes only. The plan has been prepared with due diligence and whilst we have confidence in the information produced it should not be relied upon. Maximum lengths and widths are represented on the plan. If there are any aspects of particular importance, you should carry out or commission your own inspection of the property. Copyright © SKMSTUDIO
Plan produced using PlanUp.□