



Town & Country

Cowper Road, Markyate

Guide Price £385,000



## Cowper Road

### Markyate

- Three Bedroom Semi Detached Family Home
- Entrance Hallway
- Lounge and Separate Dining Room
- Fitted Kitchen
- Family Bathroom On Upper Floor
- Good Sized Rear Garden
- Must Be Viewed
- Excellent Value For A Herts Home

Council Tax band: D

Tenure: Freehold

EPC Energy Efficiency Rating: D

EPC Environmental Impact Rating: D



# Cowper Road

## Markyate

This three-bedroom semi-detached family home in Hertfordshire is a perfect blend of comfortable living spaces and convenient features. Upon entering, you are greeted by a welcoming entrance hallway that leads to a lounge, ideal for relaxation, and a separate dining room, perfect for family gatherings and entertaining guests. The fitted kitchen provides a practical space for family cooking.

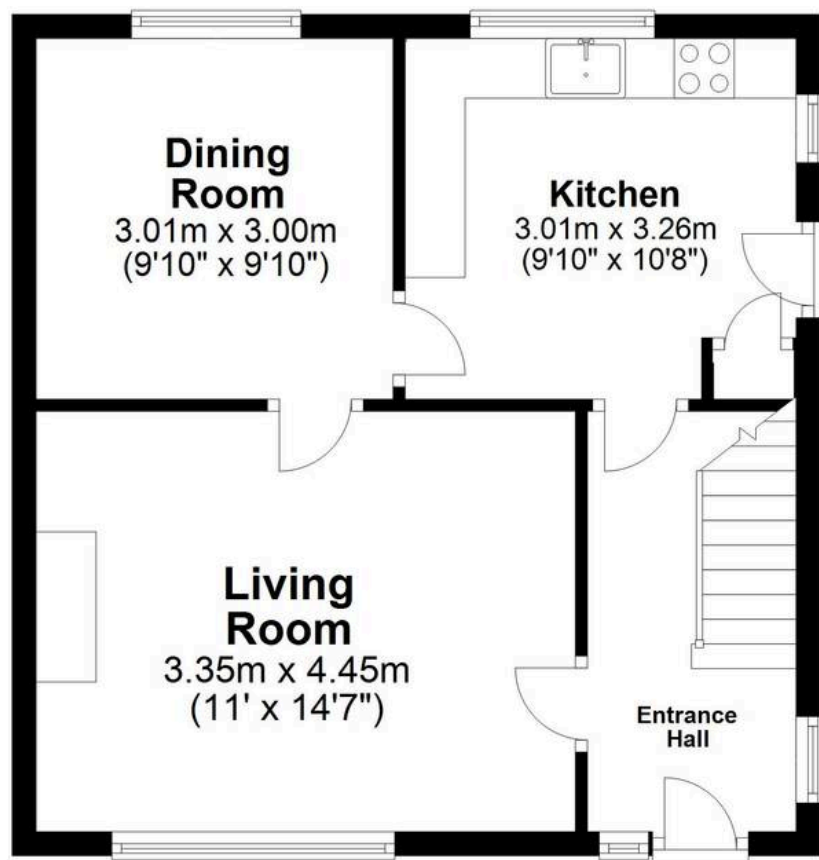
Moving to the upper floor, you will find a family bathroom and the three bedrooms. The property also boasts a good-sized rear garden, offering a great outdoor space.

Encompassing warm community vibes and a desirable location, this property is a must-see for those seeking a family-friendly environment. The excellent value this home offers makes it an attractive proposition for those looking to settle down in Herts. Arrange a viewing today to experience the this happy family home.



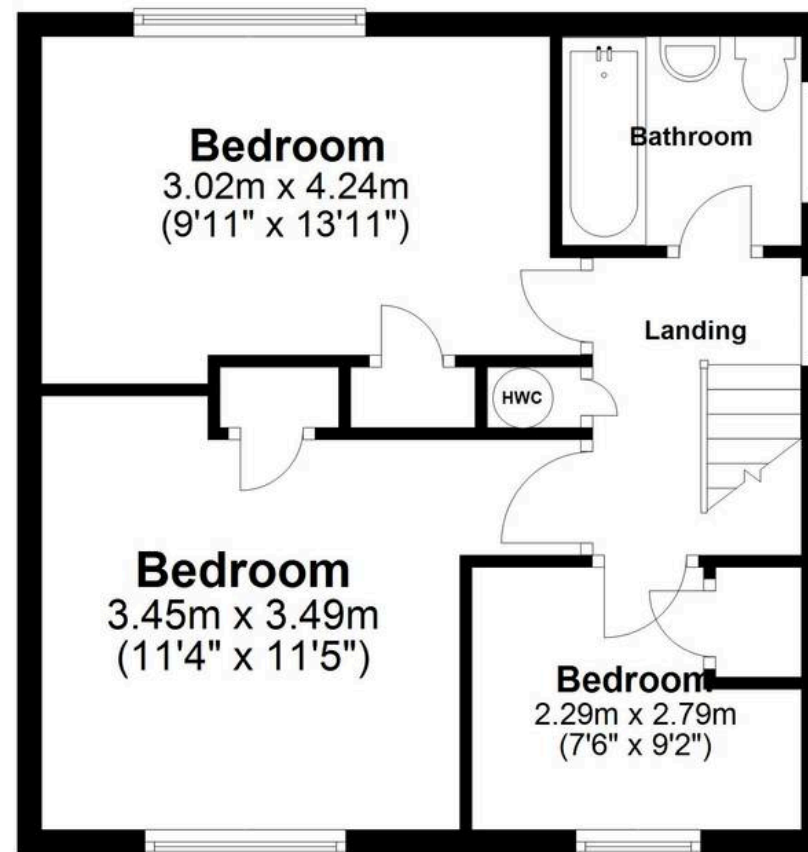
## Ground Floor

Approx. 41.1 sq. metres (442.4 sq. feet)



## First Floor

Approx. 41.9 sq. metres (451.1 sq. feet)



Total area: approx. 83.0 sq. metres (893.5 sq. feet)

The Floor Plan is not to Scale and measurements and areas shown are approximate and therefore should be used for illustrative purposes only. The plan has been prepared with due diligence and whilst we have confidence in the information produced it should not be relied upon. Maximum lengths and widths are represented on the plan. If there are any aspects of particular importance, you should carry out or commission your own inspection of the property. Copyright © SKMSTUDIO

Plan produced using PlanUp. □